

# RESIDENTS GROUPS



IRISH TRAVELLER  
MOVEMENT IN BRITAIN

[www.irishtraveller.org.uk](http://www.irishtraveller.org.uk)

## Setting up a Residents' Group

*Ensuring your Voice  
is Heard*



**Your home.  
Your life.**

**A Residents Group is** a group of people who live in a specific area, who join together in order to take up issues that concern residents, to voice the residents' views to the landlord/local authority, to campaign on a specific issue, and/or to influence decisions that affect their lives.

## **ITMB can...**

### **ORGANISE.....**

first meetings with residents and local authorities or landlords.

### **HELP.....**

first steps of setting up the group e.g. Creating a constitution.

### **ADVISE.....**

local authorities or landlords on dealing with specific site needs.

### **SUPPORT.....**

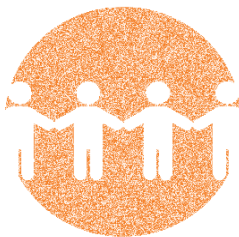
residents and the group with any training they may need or want.

## Stopping action



Trying to stop an action - closing of a road or a local youth centre.

## Community



All getting together to do something and building a strong sense of Community.

**How  
does  
this  
help  
YOU?**

## inclusion



Getting involved in local networks and at community events

## Starting new projects



Pushing for a new project to be carried out—a new utility blocks, repairs, children's' play area.

## Making your own Decisions



Involving and Influencing decisions that can directly affect you home and life.

## GOOD CONTACTS....

### **Chartered Institute of Housing (CIH)**

The Good Practice Unit, Octavia House, Westwood Way,  
Coventry, CV4 8JP  
Tel: 01203 851700  
Website: [www.cih.org](http://www.cih.org)

### **Tenant Participation Advisory Service (TPAS)**

5th Floor, Trafford House,  
Chester Road, Manchester, M32 0RS  
Telephone: 0161 868 3500  
Email: [info@tpas.org.uk](mailto:info@tpas.org.uk)  
Website: [www.tpas.org.uk](http://www.tpas.org.uk)

### **Tenets and Residents Organisations of England (TAROE)**

Jackson House  
2nd Avenue  
Runcorn  
WA7 2PD  
Tel: 01928 701001      01928 701001  
email: [runcornoffice@taroe.org](mailto:runcornoffice@taroe.org)

Grace O'Malley—**London**—East and  
South England

Scott Philips—**Birmingham**—The  
Midlands and Northern England

ITMB,  
The Resource Centre,  
356 Holloway Rd,  
London, N7 6PA

[www.irishtraveller.org.uk](http://www.irishtraveller.org.uk)

Tel; 0207 607 2002  
Fax; 0207 607 2005

[grace@irishtraveller.org.uk](mailto:grace@irishtraveller.org.uk)

ITMB B'ham Office,  
1 Victoria Square,  
Birmingham, B1 1BD

[www.irishtraveller.org.uk](http://www.irishtraveller.org.uk)

Tel; 0121 6322791  
Fax; 0121 632 2792

[scott@irishtraveller.org.uk](mailto:scott@irishtraveller.org.uk)



ITMB is able to provide this training with support from their generous

